

Sedgwick County Housing Report



Market Overview

Sedgwick County Home Sales Fell in November

Total home sales in Sedgwick County fell last month to 517 units, compared to 766 units in November 2021. Total sales volume was \$129.0 million, down from a year earlier.

The median sale price in November was \$220,000, up from \$210,000 a year earlier. Homes that sold in November were typically on the market for 5 days and sold for 100.0% of their list prices.

Sedgwick County Active Listings Up at End of November

The total number of active listings in Sedgwick County at the end of November was 841 units, up from 535 at the same point in 2021. This represents a 1.3 months' supply of homes available for sale. The median list price of homes on the market at the end of November was \$315,000.

During November, a total of 458 contracts were written down from 625 in November 2021. At the end of the month, there were 679 contracts still pending.

Report Contents

- **Summary Statistics – Page 2**
- **Closed Listing Analysis – Page 3**
- **Active Listings Analysis – Page 7**
- **Months' Supply Analysis – Page 11**
- **New Listings Analysis – Page 12**
- **Contracts Written Analysis – Page 15**
- **Pending Contracts Analysis – Page 19**

Contact Information

Stacy Latimer, President
South Central Kansas MLS
170 W. Dewey
Wichita, KS 67206
stacyl@remax.net
www.sckrealtors.com



**November
2022**

South Central Kansas MLS Statistics



South Central Kansas MLS

Sedgwick County Summary Statistics

November MLS Statistics Three-year History		Current Month			Year-to-Date		
		2022	2021	2020	2022	2021	2020
Home Sales Change from prior year		517 -32.5%	766 4.9%	730 7.2%	7,279 -14.2%	8,481 5.2%	8,061 5.9%
Active Listings Change from prior year		841 57.2%	535 -35.6%	831 -34.2%	N/A	N/A	N/A
Months' Supply Change from prior year		1.3 85.7%	0.7 -36.4%	1.1 -42.1%	N/A	N/A	N/A
New Listings Change from prior year		500 -21.3%	635 -4.2%	663 -1.8%	8,128 -13.8%	9,430 0.0%	9,434 -0.5%
Contracts Written Change from prior year		458 -26.7%	625 -7.1%	673 16.6%	7,002 -19.7%	8,719 2.2%	8,534 8.4%
Pending Contracts Change from prior year		679 -37.2%	1,081 1.5%	1,065 26.5%	N/A	N/A	N/A
Sales Volume (1,000s) Change from prior year		128,952 -28.0%	179,087 17.4%	152,501 20.6%	1,821,696 -4.4%	1,906,409 16.6%	1,635,386 17.0%
Average	Sale Price Change from prior year	249,423 6.7%	233,795 11.9%	208,906 12.5%	250,267 11.3%	224,786 10.8%	202,876 10.5%
	List Price of Actives Change from prior year	357,234 16.4%	306,828 3.6%	296,174 6.2%	N/A	N/A	N/A
	Days on Market Change from prior year	19 5.6%	18 -14.3%	21 -41.7%	14 -17.6%	17 -34.6%	26 -23.5%
	Percent of List Change from prior year	100.1% 0.2%	99.9% 0.5%	99.4% 0.7%	101.5% 0.9%	100.6% 1.3%	99.3% 0.8%
	Percent of Original Change from prior year	99.3% 0.7%	98.6% 0.1%	98.5% 1.8%	101.0% 1.1%	99.9% 1.6%	98.3% 1.2%
Median	Sale Price Change from prior year	220,000 4.8%	210,000 16.3%	180,500 11.1%	221,726 11.4%	199,000 11.8%	178,000 10.2%
	List Price of Actives Change from prior year	315,000 26.5%	249,000 1.7%	244,950 8.9%	N/A	N/A	N/A
	Days on Market Change from prior year	5 0.0%	5 0.0%	5 -58.3%	3 -25.0%	4 -33.3%	6 -50.0%
	Percent of List Change from prior year	100.0% 0.0%	100.0% 0.0%	100.0% 0.0%	100.0% 0.0%	100.0% 0.0%	100.0% 0.0%
	Percent of Original Change from prior year	100.0% 0.0%	100.0% 0.0%	100.0% 1.3%	100.0% 0.0%	100.0% 0.0%	100.0% 1.2%

Note: Year-to-date statistics cannot be calculated for Active Listings, Months' Supply and Pending Contracts.



**November
2022**

South Central Kansas MLS Statistics



South Central Kansas MLS

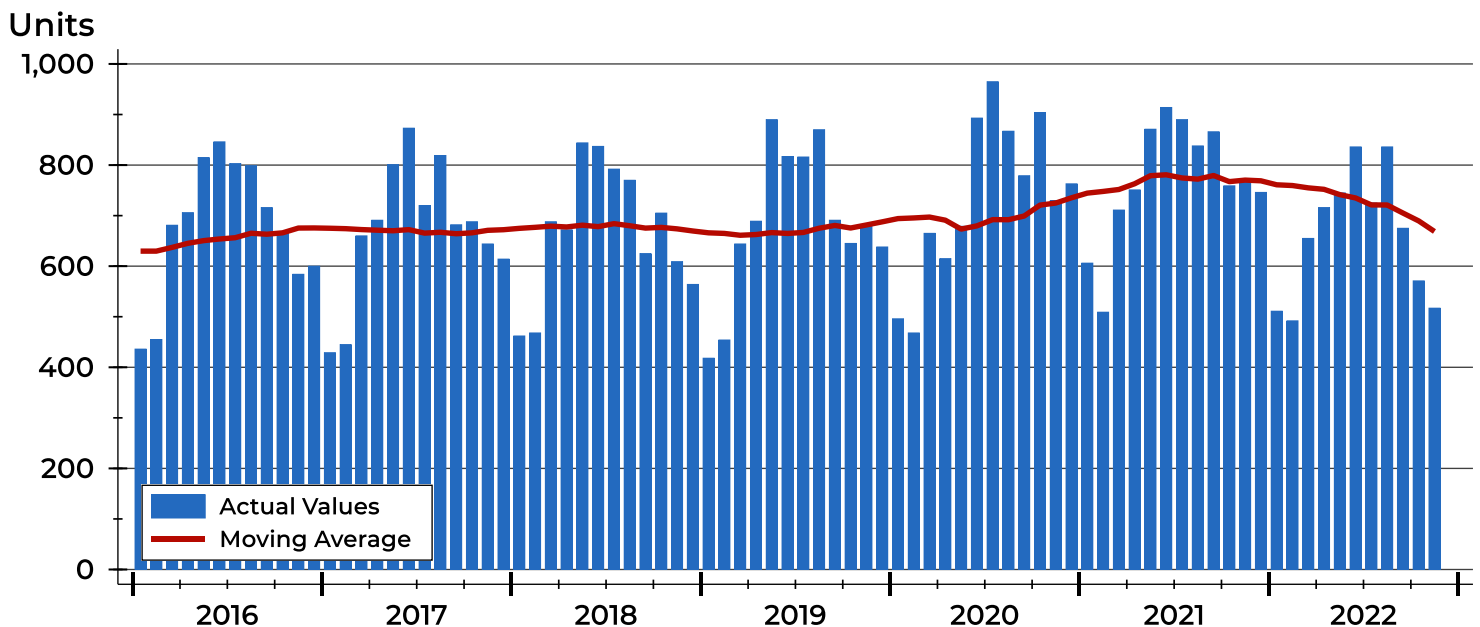
Sedgwick County Closed Listings Analysis

Summary Statistics for Closed Listings		November 2021			Year-to-Date 2021		
		2022	2021	Change	2022	2021	Change
Closed Listings		517	766	-32.5%	7,279	8,481	-14.2%
Volume (1,000s)		128,952	179,087	-28.0%	1,821,696	1,906,409	-4.4%
Months' Supply		1.3	0.7	85.7%	N/A	N/A	N/A
Average	Sale Price	249,423	233,795	6.7%	250,267	224,786	11.3%
	Days on Market	19	18	5.6%	14	17	-17.6%
	Percent of List	100.1%	99.9%	0.2%	101.5%	100.6%	0.9%
	Percent of Original	99.3%	98.6%	0.7%	101.0%	99.9%	1.1%
Median	Sale Price	220,000	210,000	4.8%	221,726	199,000	11.4%
	Days on Market	5	5	0.0%	3	4	-25.0%
	Percent of List	100.0%	100.0%	0.0%	100.0%	100.0%	0.0%
	Percent of Original	100.0%	100.0%	0.0%	100.0%	100.0%	0.0%

A total of 517 homes sold in Sedgwick County in November, down from 766 units in November 2021. Total sales volume fell to \$129.0 million compared to \$179.1 million in the previous year.

The median sales price in November was \$220,000, up 4.8% compared to the prior year. Median days on market was 5 days, down from 6 days in October, but similar to November 2021.

History of Closed Listings





**November
2022**

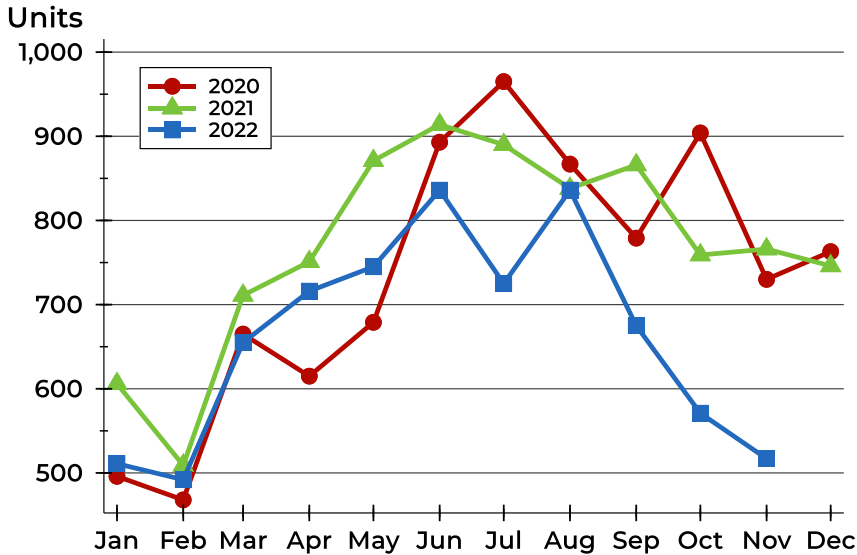
South Central Kansas MLS Statistics



South Central Kansas MLS

Sedgwick County Closed Listings Analysis

Closed Listings by Month



Month	2020	2021	2022
January	496	606	511
February	468	509	492
March	665	711	655
April	615	751	716
May	679	871	745
June	893	914	836
July	965	890	725
August	867	838	836
September	779	866	675
October	904	759	571
November	730	766	517
December	763	746	

Closed Listings by Price Range

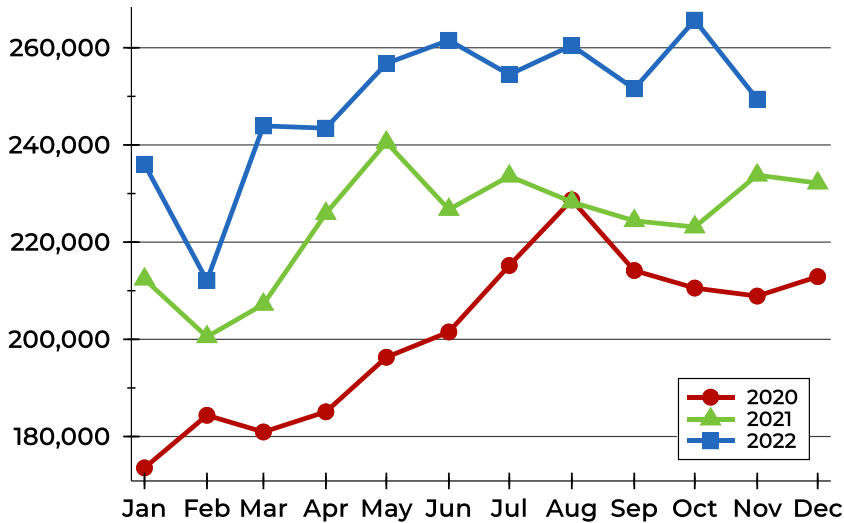
Price Range	Sales Number	Percent	Months' Supply	Sale Price Average	Median	Days on Market Avg.	Med.	Price as % of List Avg.	Med.	Price as % of Orig. Avg.	Med.
Below \$25,000	0	0.0%	N/A	N/A	N/A	N/A	N/A	N/A	N/A	N/A	N/A
\$25,000-\$49,999	11	2.1%	0.3	37,036	37,500	38	26	92.7%	94.0%	85.7%	85.9%
\$50,000-\$99,999	46	8.9%	0.5	79,074	83,000	19	7	97.6%	100.0%	95.2%	99.4%
\$100,000-\$124,999	36	7.0%	0.8	111,903	110,000	22	12	98.4%	100.0%	96.7%	99.6%
\$125,000-\$149,999	55	10.6%	0.7	134,430	134,900	13	4	100.9%	100.0%	98.8%	100.0%
\$150,000-\$174,999	42	8.1%	0.5	161,518	160,000	8	3	101.3%	100.1%	101.1%	100.1%
\$175,000-\$199,999	34	6.6%	0.7	185,867	185,000	12	4	101.9%	100.0%	100.7%	100.0%
\$200,000-\$249,999	93	18.0%	0.5	223,894	225,000	18	5	100.6%	100.0%	101.2%	100.0%
\$250,000-\$299,999	65	12.6%	1.6	272,319	270,000	30	4	100.3%	100.0%	100.1%	100.0%
\$300,000-\$399,999	65	12.6%	1.8	345,073	340,000	24	10	99.9%	100.0%	99.0%	100.0%
\$400,000-\$499,999	34	6.6%	3.2	442,891	428,857	12	8	100.7%	100.0%	100.1%	100.2%
\$500,000-\$749,999	26	5.0%	2.3	601,145	578,288	15	3	101.7%	100.0%	100.5%	100.0%
\$750,000-\$999,999	8	1.5%	2.9	826,050	816,502	18	0	101.1%	101.0%	99.3%	101.0%
\$1,000,000 and up	2	0.4%	5.2	1,066,300	1,066,300	1	1	100.0%	100.0%	100.0%	100.0%



Sedgwick County Closed Listings Analysis

Average Price

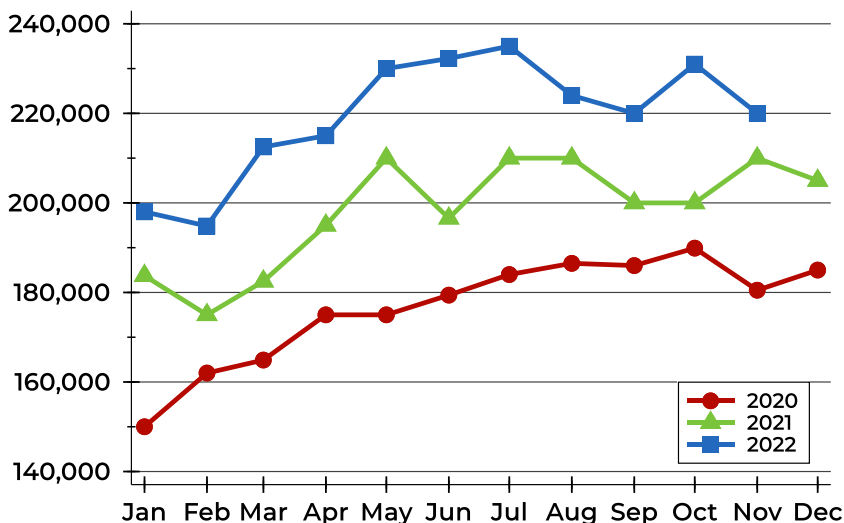
Dollars



Month	2020	2021	2022
January	173,548	212,388	236,036
February	184,377	200,517	212,093
March	180,935	207,197	243,917
April	185,087	225,891	243,454
May	196,318	240,540	256,769
June	201,517	226,726	261,540
July	215,195	233,584	254,485
August	228,696	228,270	260,468
September	214,163	224,397	251,557
October	210,550	223,115	265,684
November	208,906	233,795	249,423
December	212,901	232,155	

Median Price

Dollars

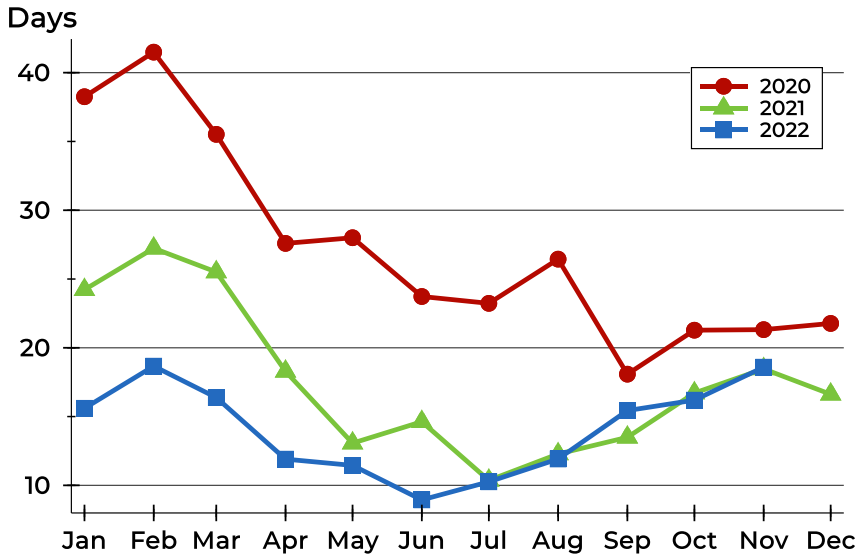


Month	2020	2021	2022
January	150,000	183,750	198,000
February	162,000	175,000	194,839
March	164,900	182,500	212,500
April	175,000	195,000	215,000
May	175,000	210,000	230,000
June	179,400	196,569	232,257
July	184,000	210,000	235,000
August	186,500	210,000	224,000
September	186,000	200,000	220,000
October	189,900	200,000	231,000
November	180,500	210,000	220,000
December	185,000	205,000	



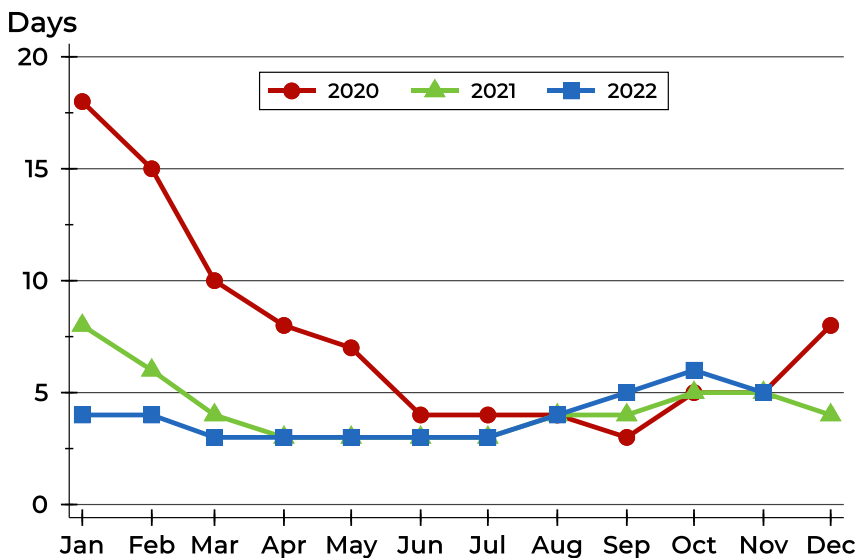
Sedgwick County Closed Listings Analysis

Average DOM



Month	2020	2021	2022
January	38	24	16
February	41	27	19
March	36	26	16
April	28	18	12
May	28	13	11
June	24	15	9
July	23	10	10
August	26	12	12
September	18	13	15
October	21	17	16
November	21	18	19
December	22	17	

Median DOM



Month	2020	2021	2022
January	18	8	4
February	15	6	4
March	10	4	3
April	8	3	3
May	7	3	3
June	4	3	3
July	4	3	3
August	4	4	4
September	3	4	5
October	5	5	6
November	5	5	5
December	8	4	



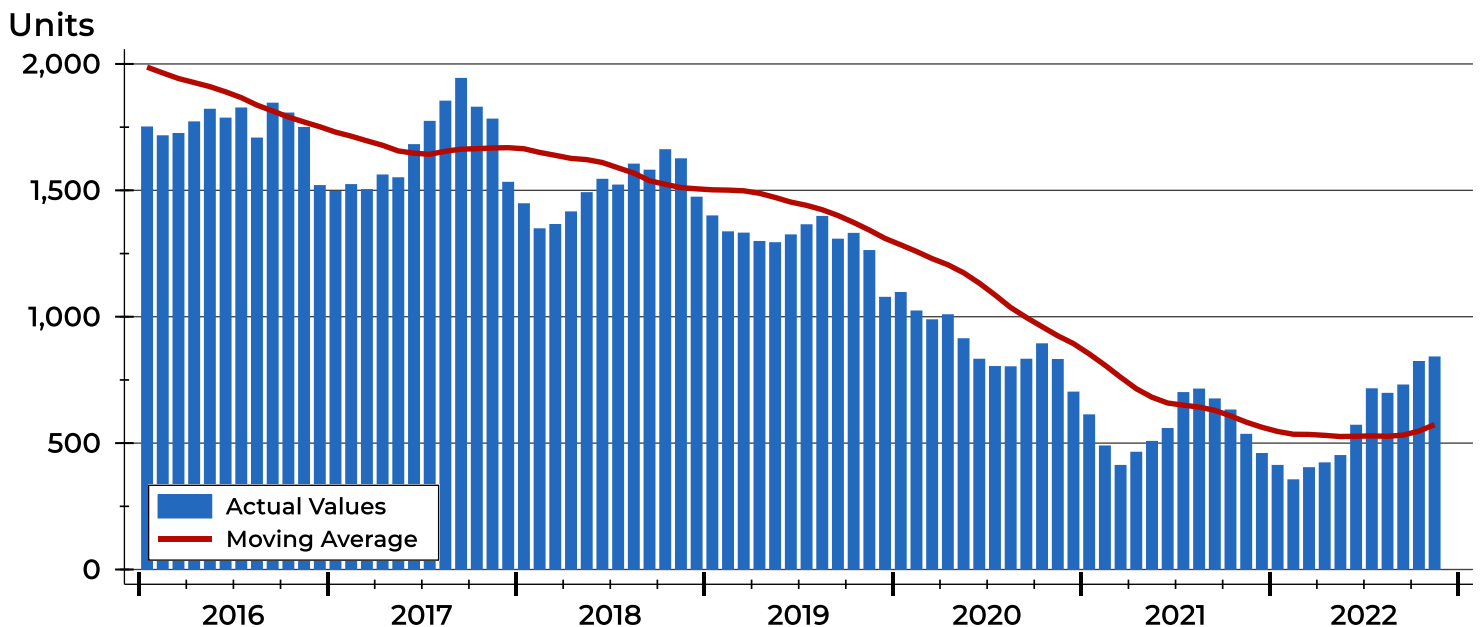
Sedgwick County Active Listings Analysis

Summary Statistics for Active Listings		2022	End of November 2021	Change
Active Listings		841	535	57.2%
Volume (1,000s)		300,434	164,153	83.0%
Months' Supply		1.3	0.7	85.7%
Average	List Price	357,234	306,828	16.4%
	Days on Market	56	43	30.2%
	Percent of Original	99.0%	99.3%	-0.3%
Median	List Price	315,000	249,000	26.5%
	Days on Market	29	24	20.8%
	Percent of Original	100.0%	100.0%	0.0%

A total of 841 homes were available for sale in Sedgwick County at the end of November. This represents a 1.3 months' supply of active listings.

The median list price of homes on the market at the end of November was \$315,000, up 26.5% from 2021. The typical time on market for active listings was 29 days, up from 24 days a year earlier.

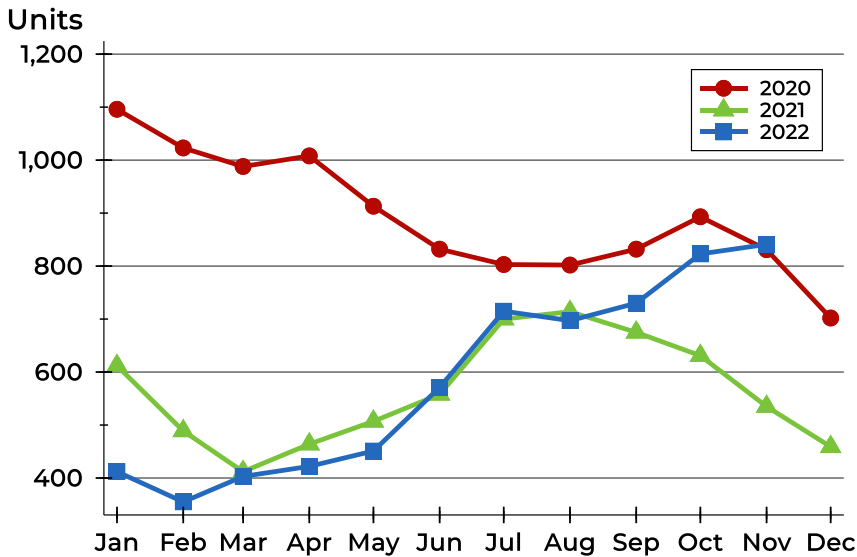
History of Active Listings





Sedgwick County Active Listings Analysis

Active Listings by Month



Month	2020	2021	2022
January	1,096	612	412
February	1,023	489	355
March	988	412	403
April	1,008	464	422
May	913	507	451
June	832	558	571
July	803	700	715
August	802	714	697
September	832	675	730
October	893	631	823
November	831	535	841
December	702	459	

Active Listings by Price Range

Price Range	Active Listings Number	Percent	Months' Supply	List Price Average	Median	Days on Market Avg.	Med.	Price as % of Orig. Avg.	Med.
Below \$25,000	8	1.0%	N/A	1,748	1,700	21	16	98.5%	100.0%
\$25,000-\$49,999	4	0.5%	0.3	35,475	35,950	5	4	100.0%	100.0%
\$50,000-\$99,999	35	4.3%	0.5	85,509	85,000	55	38	94.9%	97.0%
\$100,000-\$124,999	35	4.3%	0.8	114,030	115,000	39	23	96.3%	100.0%
\$125,000-\$149,999	42	5.2%	0.7	136,864	136,000	37	26	97.9%	100.0%
\$150,000-\$174,999	27	3.3%	0.5	161,511	160,000	28	22	97.7%	100.0%
\$175,000-\$199,999	36	4.4%	0.7	188,901	189,450	41	29	96.6%	100.0%
\$200,000-\$249,999	60	7.4%	0.5	228,840	229,900	40	17	99.3%	100.0%
\$250,000-\$299,999	141	17.4%	1.6	273,168	274,900	96	34	101.3%	100.0%
\$300,000-\$399,999	182	22.4%	1.8	353,572	349,900	39	17	99.2%	100.0%
\$400,000-\$499,999	131	16.2%	3.2	451,369	449,000	58	36	99.4%	100.0%
\$500,000-\$749,999	72	8.9%	2.3	590,664	572,450	44	45	99.5%	100.0%
\$750,000-\$999,999	19	2.3%	2.9	863,445	875,000	53	57	100.0%	100.0%
\$1,000,000 and up	19	2.3%	5.2	1,631,996	1,500,000	235	147	96.8%	100.0%



**November
2022**

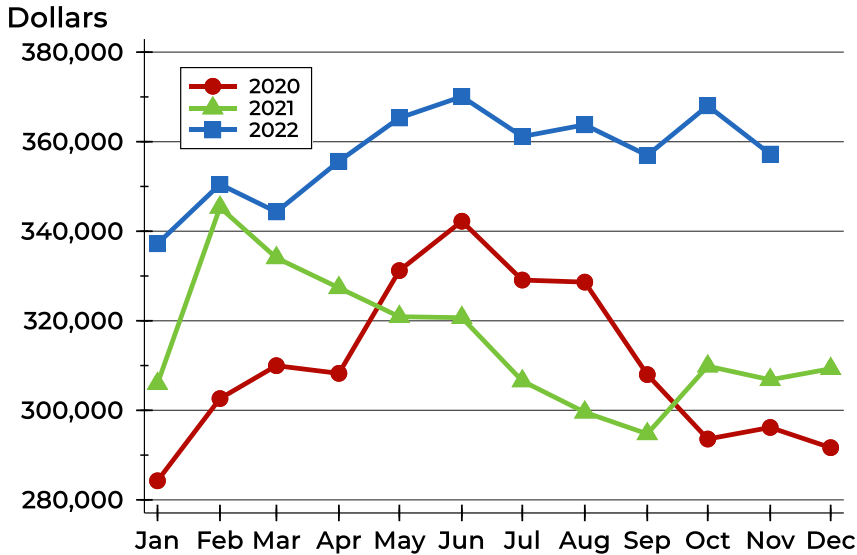
South Central Kansas MLS Statistics



South Central Kansas MLS

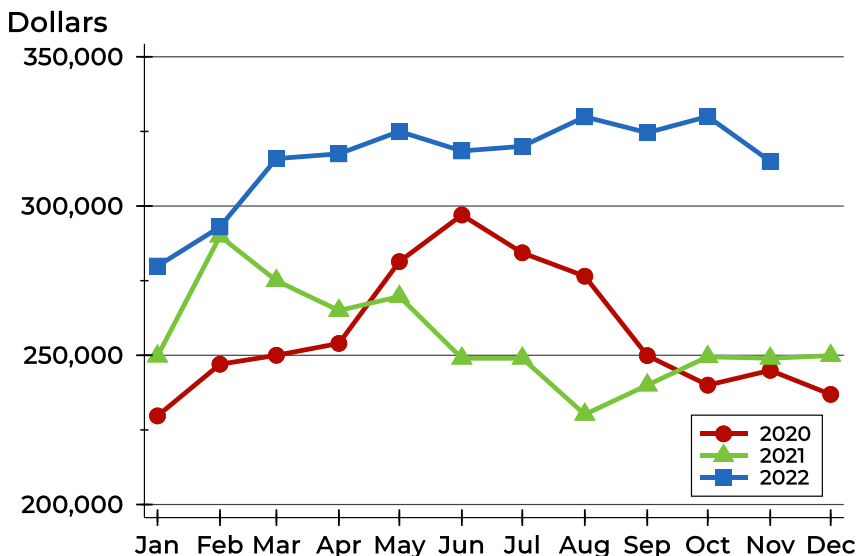
Sedgwick County Active Listings Analysis

Average Price



Month	2020	2021	2022
January	284,263	305,944	337,207
February	302,630	345,317	350,478
March	309,973	334,049	344,317
April	308,257	327,365	355,627
May	331,213	320,912	365,302
June	342,243	320,691	370,070
July	329,094	306,560	361,160
August	328,633	299,571	363,772
September	307,985	294,747	356,940
October	293,585	309,862	368,017
November	296,174	306,828	357,234
December	291,658	309,287	

Median Price

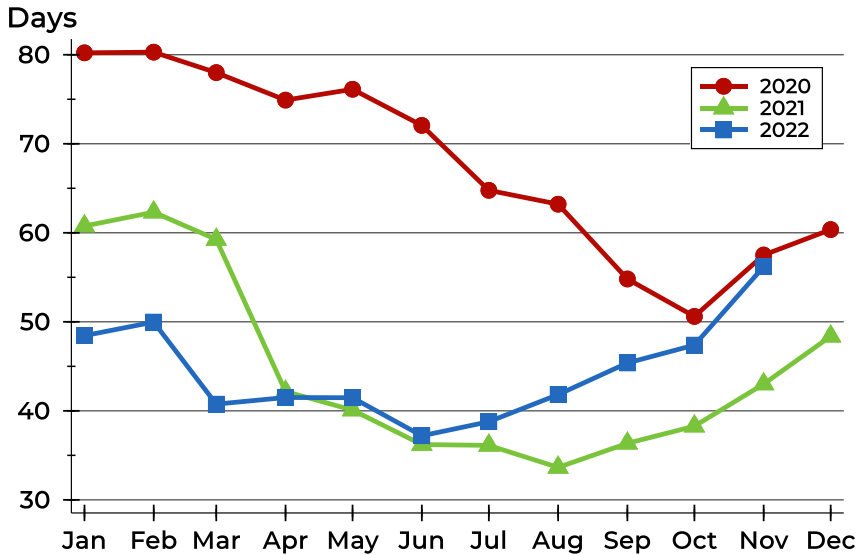


Month	2020	2021	2022
January	229,700	249,700	279,900
February	247,000	289,900	293,000
March	250,000	275,000	315,900
April	253,972	265,000	317,500
May	281,390	269,700	325,000
June	297,010	249,000	318,465
July	284,342	249,000	320,000
August	276,500	230,200	329,900
September	249,900	240,000	324,590
October	240,000	249,500	330,000
November	244,950	249,000	315,000
December	236,900	249,900	



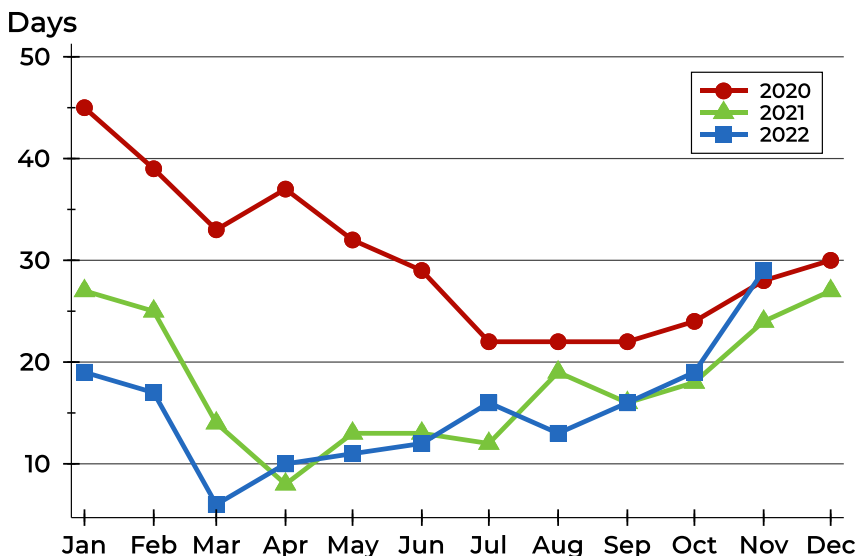
Sedgwick County Active Listings Analysis

Average DOM



Month	2020	2021	2022
January	80	61	48
February	80	62	50
March	78	59	41
April	75	42	42
May	76	40	41
June	72	36	37
July	65	36	39
August	63	34	42
September	55	36	45
October	51	38	47
November	58	43	56
December	60	48	

Median DOM

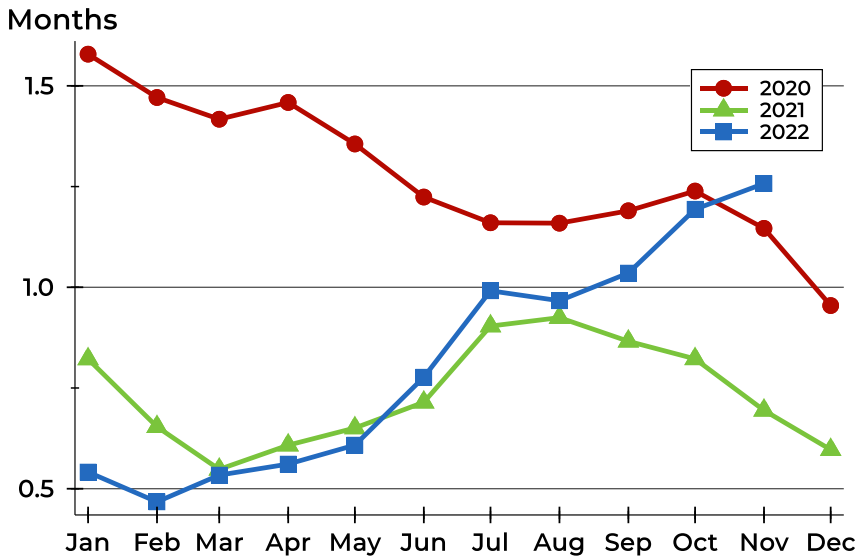


Month	2020	2021	2022
January	45	27	19
February	39	25	17
March	33	14	6
April	37	8	10
May	32	13	11
June	29	13	12
July	22	12	16
August	22	19	13
September	22	16	16
October	24	18	19
November	28	24	29
December	30	27	



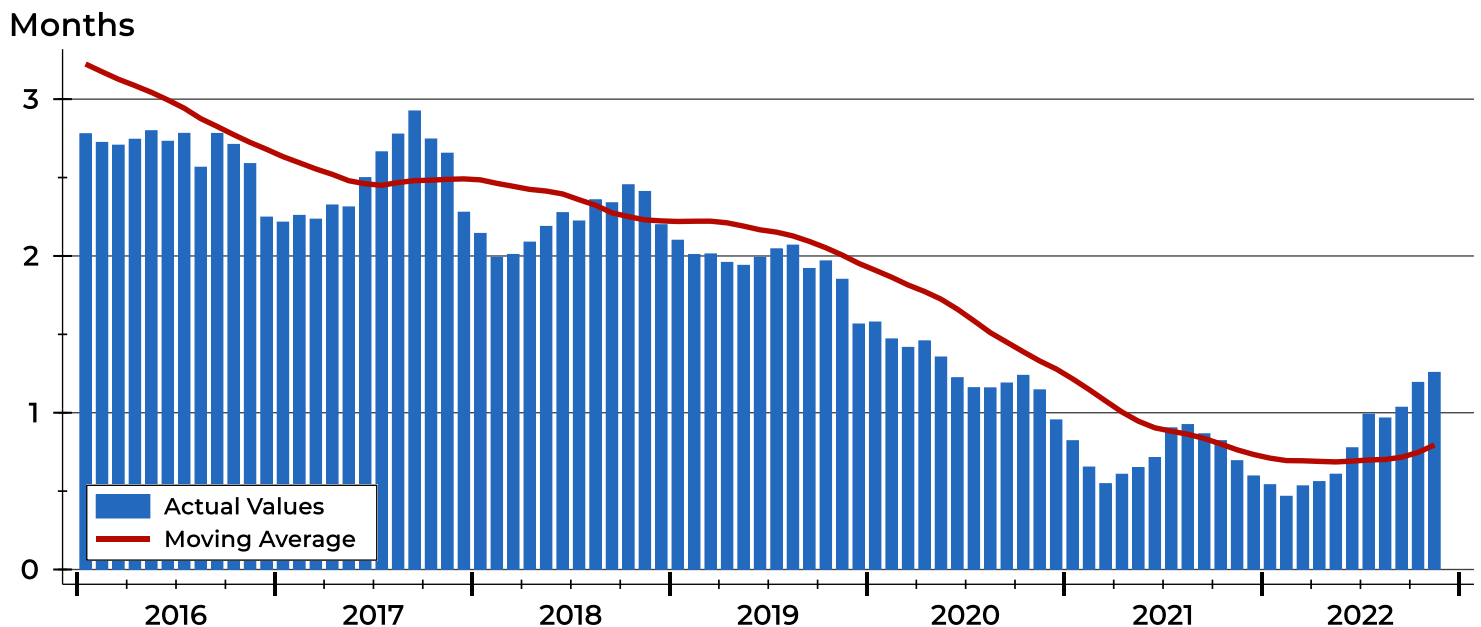
Sedgwick County Months' Supply Analysis

Months' Supply by Month



Month	2020	2021	2022
January	1.6	0.8	0.5
February	1.5	0.7	0.5
March	1.4	0.5	0.5
April	1.5	0.6	0.6
May	1.4	0.7	0.6
June	1.2	0.7	0.8
July	1.2	0.9	1.0
August	1.2	0.9	1.0
September	1.2	0.9	1.0
October	1.2	0.8	1.2
November	1.1	0.7	1.3
December	1.0	0.6	1.3

History of Month's Supply





Sedgwick County New Listings Analysis

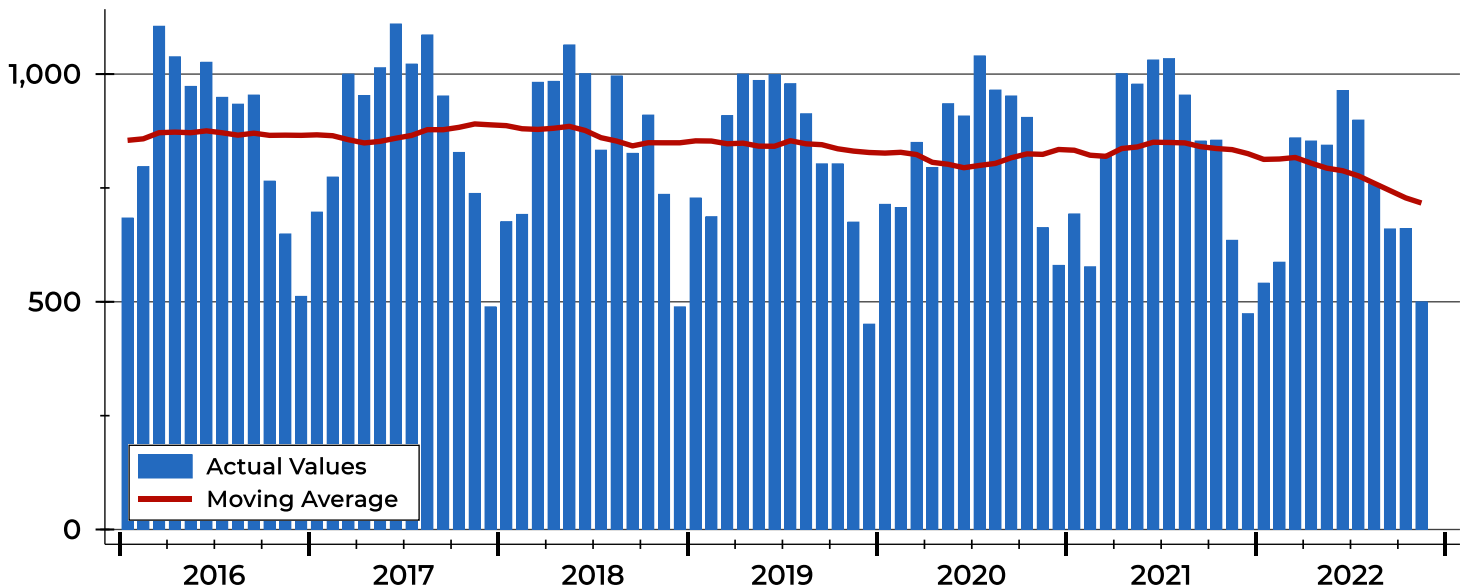
Summary Statistics for New Listings		2022	November 2021	Change
Current Month	New Listings	500	635	-21.3%
	Volume (1,000s)	114,403	141,273	-19.0%
	Average List Price	228,806	222,478	2.8%
	Median List Price	199,000	186,000	7.0%
Year-to-Date	New Listings	8,128	9,430	-13.8%
	Volume (1,000s)	2,060,321	2,174,402	-5.2%
	Average List Price	253,484	230,583	9.9%
	Median List Price	225,000	199,251	12.9%

A total of 500 new listings were added in Sedgwick County during November, down 21.3% from the same month in 2021. Year-to-date Sedgwick County has seen 8,128 new listings.

The median list price of these homes was \$199,000 up from \$186,000 in 2021.

History of New Listings

Units





**November
2022**

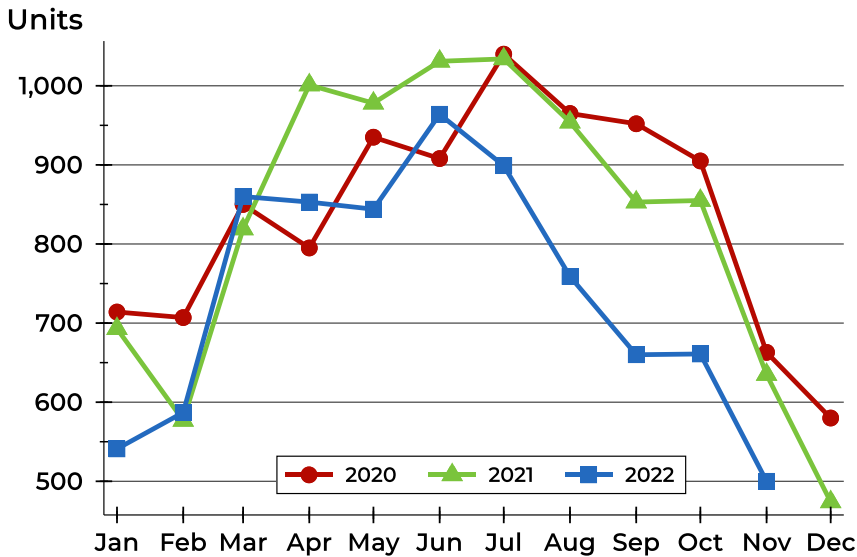
South Central Kansas MLS Statistics



South Central Kansas MLS

Sedgwick County New Listings Analysis

New Listings by Month



Month	2020	2021	2022
January	714	693	541
February	707	577	587
March	850	819	860
April	795	1,001	853
May	935	978	844
June	908	1,031	964
July	1,040	1,034	899
August	965	954	759
September	952	853	660
October	905	855	661
November	663	635	500
December	580	474	

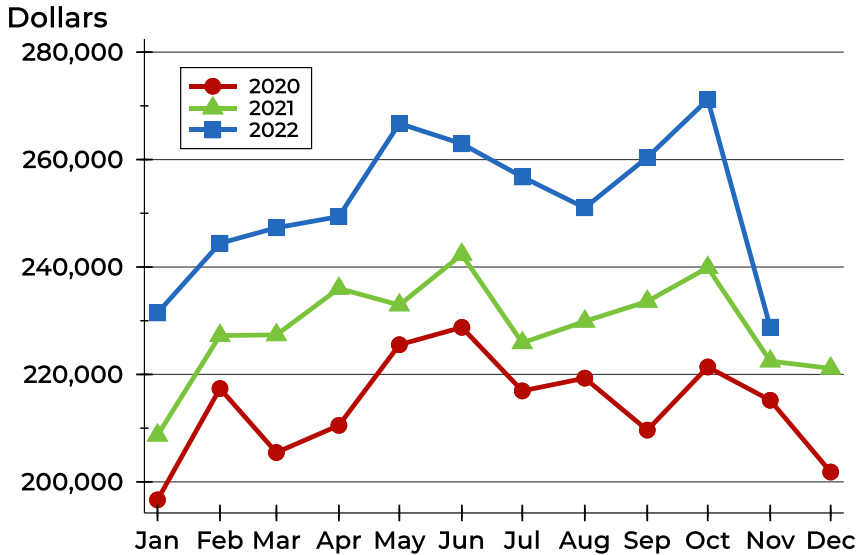
New Listings by Price Range

Price Range	New Listings Number	Percent	List Price Average	Median	Days on Market Avg.	Med.	Price as % of Orig. Avg.	Med.
Below \$25,000	11	2.3%	1,568	1,385	12	7	98.7%	100.0%
\$25,000-\$49,999	6	1.3%	41,950	42,450	7	7	96.2%	100.0%
\$50,000-\$99,999	30	6.3%	85,753	89,900	13	11	99.3%	100.0%
\$100,000-\$124,999	43	9.1%	112,431	114,900	11	6	99.2%	100.0%
\$125,000-\$149,999	60	12.6%	136,192	135,000	11	9	99.1%	100.0%
\$150,000-\$174,999	49	10.3%	160,480	160,000	10	5	99.6%	100.0%
\$175,000-\$199,999	51	10.7%	188,960	187,900	11	5	99.5%	100.0%
\$200,000-\$249,999	62	13.1%	226,385	229,900	11	8	99.9%	100.0%
\$250,000-\$299,999	65	13.7%	274,799	274,900	13	11	99.4%	100.0%
\$300,000-\$399,999	49	10.3%	348,377	345,000	11	9	99.7%	100.0%
\$400,000-\$499,999	30	6.3%	444,878	440,570	13	10	99.8%	100.0%
\$500,000-\$749,999	14	2.9%	601,676	554,500	9	3	99.8%	100.0%
\$750,000-\$999,999	4	0.8%	849,200	840,000	7	0	100.0%	100.0%
\$1,000,000 and up	1	0.2%	1,200,000	1,200,000	22	22	100.0%	100.0%



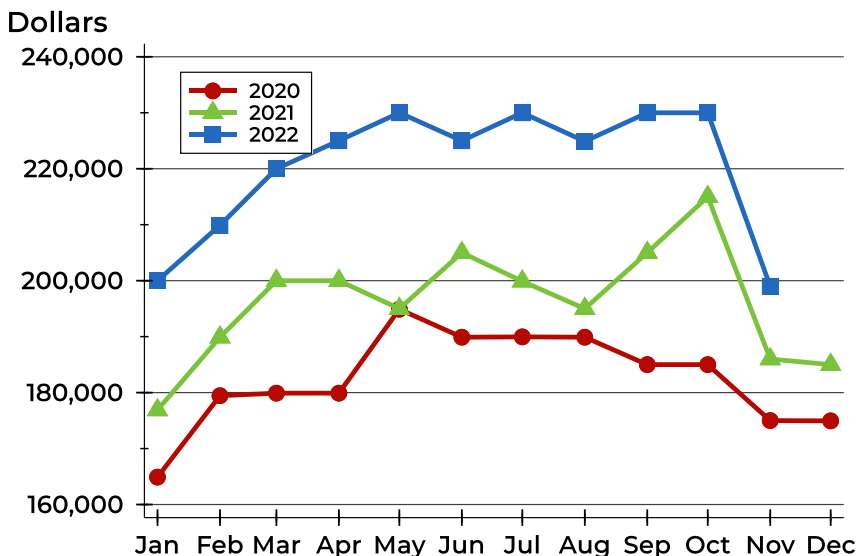
Sedgwick County New Listings Analysis

Average Price



Month	2020	2021	2022
January	196,649	208,672	231,449
February	217,378	227,238	244,421
March	205,470	227,364	247,311
April	210,518	236,010	249,388
May	225,532	232,918	266,719
June	228,767	242,332	262,944
July	216,937	225,886	256,773
August	219,308	229,883	251,027
September	209,632	233,597	260,403
October	221,384	239,881	271,162
November	215,193	222,478	228,806
December	201,832	221,134	

Median Price



Month	2020	2021	2022
January	164,900	176,900	200,000
February	179,450	189,900	209,900
March	179,900	200,000	220,000
April	179,900	200,000	225,000
May	194,900	195,000	230,000
June	189,900	205,000	225,000
July	189,960	199,900	230,000
August	189,900	195,000	224,900
September	185,000	205,000	230,000
October	185,000	215,000	230,000
November	175,000	186,000	199,000
December	174,950	185,000	



**November
2022**

South Central Kansas MLS Statistics



South Central Kansas MLS

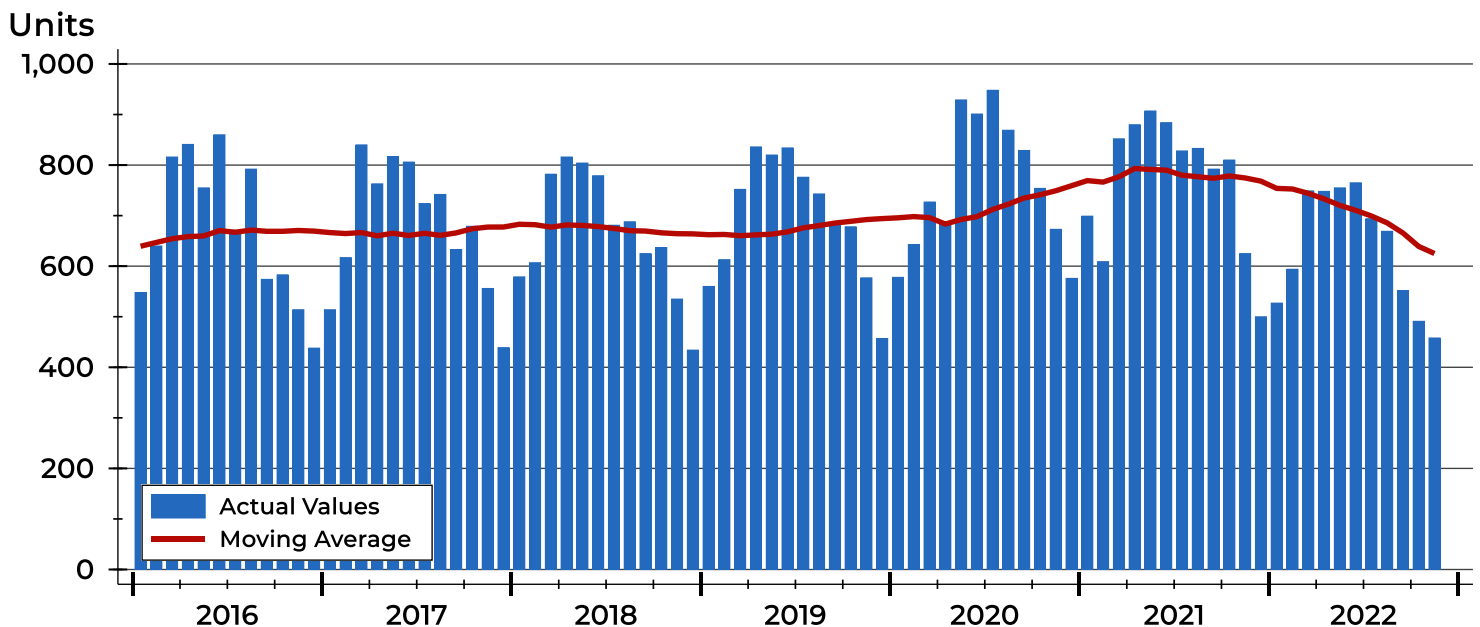
Sedgwick County Contracts Written Analysis

Summary Statistics for Contracts Written		November			Year-to-Date		
		2022	2021	Change	2022	2021	Change
Contracts Written		458	625	-26.7%	7,002	8,719	-19.7%
Volume (1,000s)		106,986	147,380	-27.4%	1,716,553	2,024,305	-15.2%
Average	Sale Price	233,594	235,808	-0.9%	245,152	232,172	5.6%
	Days on Market	19	17	11.8%	14	16	-12.5%
	Percent of Original	98.7%	99.0%	-0.3%	100.7%	100.1%	0.6%
Median	Sale Price	202,500	209,500	-3.3%	219,498	200,000	9.7%
	Days on Market	9	5	80.0%	4	3	33.3%
	Percent of Original	100.0%	100.0%	0.0%	100.0%	100.0%	0.0%

A total of 458 contracts for sale were written in Sedgwick County during the month of November, down from 625 in 2021. The median list price of these homes was \$202,500, down from \$209,500 the prior year.

Half of the homes that went under contract in November were on the market less than 9 days, compared to 5 days in November 2021.

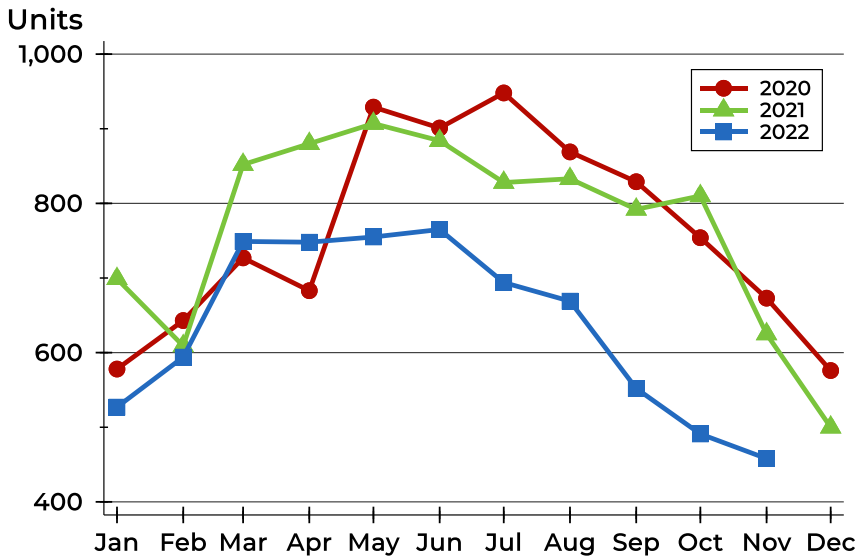
History of Contracts Written





Sedgwick County Contracts Written Analysis

Contracts Written by Month



Month	2020	2021	2022
January	578	699	527
February	643	609	594
March	727	852	749
April	683	880	748
May	929	907	755
June	901	884	765
July	948	828	694
August	869	833	669
September	829	792	552
October	754	810	491
November	673	625	458
December	576	500	

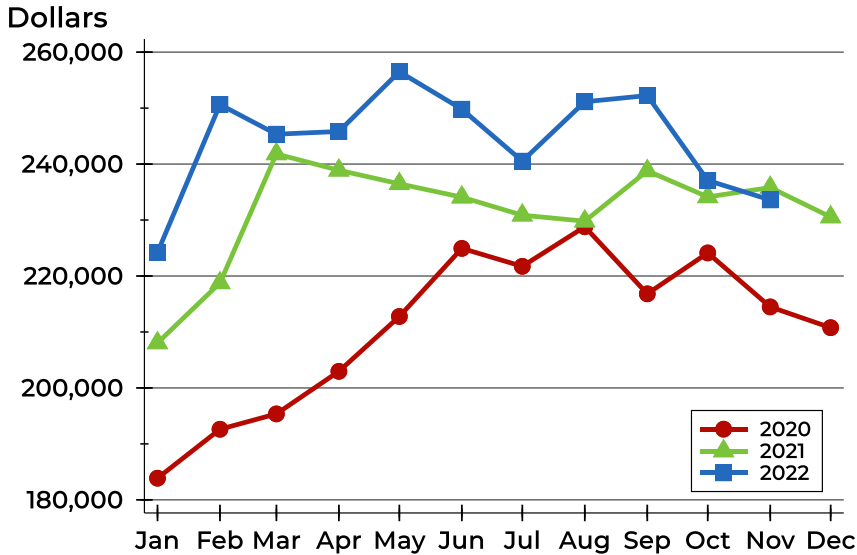
Contracts Written by Price Range

Price Range	Contracts Written Number	Percent	List Price Average	Median	Days on Market Avg.	Med.	Price as % of Orig. Avg.	Med.
Below \$25,000	0	0.0%	N/A	N/A	N/A	N/A	N/A	N/A
\$25,000-\$49,999	10	2.3%	41,420	42,450	22	12	94.4%	91.4%
\$50,000-\$99,999	31	7.2%	83,132	87,000	22	11	97.2%	100.0%
\$100,000-\$124,999	32	7.4%	112,931	115,000	11	6	98.7%	100.0%
\$125,000-\$149,999	47	10.9%	135,832	136,000	12	5	98.9%	100.0%
\$150,000-\$174,999	42	9.7%	160,276	160,000	8	4	99.5%	100.0%
\$175,000-\$199,999	47	10.9%	188,408	187,500	11	5	99.5%	100.0%
\$200,000-\$249,999	81	18.7%	225,109	225,000	16	11	99.3%	100.0%
\$250,000-\$299,999	44	10.2%	274,589	273,259	24	12	98.7%	100.0%
\$300,000-\$399,999	62	14.3%	346,627	349,700	30	19	98.1%	100.0%
\$400,000-\$499,999	19	4.4%	448,243	439,900	18	5	99.0%	100.0%
\$500,000-\$749,999	13	3.0%	588,351	560,000	32	5	97.3%	100.0%
\$750,000-\$999,999	4	0.9%	872,450	862,500	34	9	98.7%	100.0%
\$1,000,000 and up	1	0.2%	1,108,567	1,108,567	0	0	112.8%	112.8%



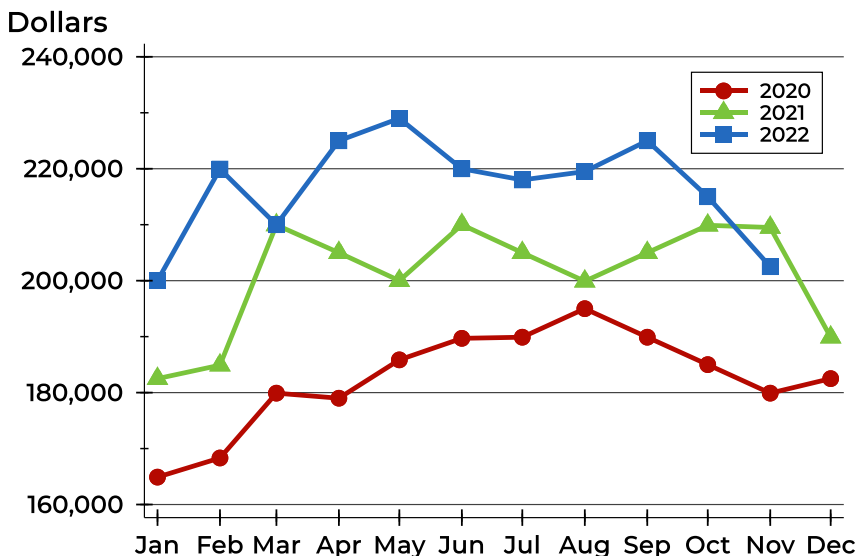
Sedgwick County Contracts Written Analysis

Average Price



Month	2020	2021	2022
January	183,872	208,043	224,208
February	192,618	218,767	250,638
March	195,359	241,812	245,341
April	202,966	238,895	245,824
May	212,771	236,480	256,504
June	224,937	234,087	249,806
July	221,730	230,865	240,532
August	228,800	229,800	251,135
September	216,817	238,789	252,246
October	224,126	234,137	237,079
November	214,478	235,808	233,594
December	210,767	230,544	

Median Price

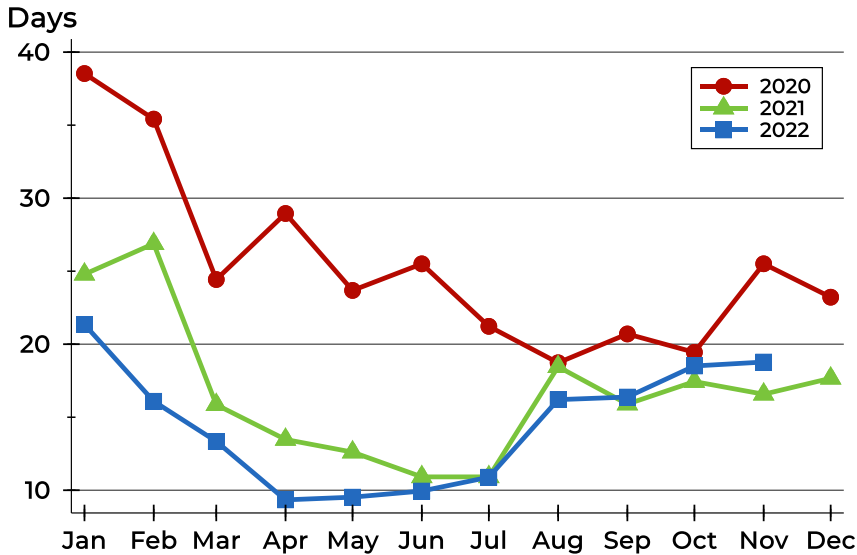


Month	2020	2021	2022
January	164,900	182,500	200,000
February	168,320	184,900	219,950
March	179,900	209,950	210,000
April	179,000	205,000	225,000
May	185,850	200,000	229,000
June	189,700	210,000	220,000
July	189,900	205,000	218,000
August	195,000	199,900	219,500
September	189,900	205,000	225,000
October	185,000	209,900	215,000
November	179,900	209,500	202,500
December	182,500	189,900	



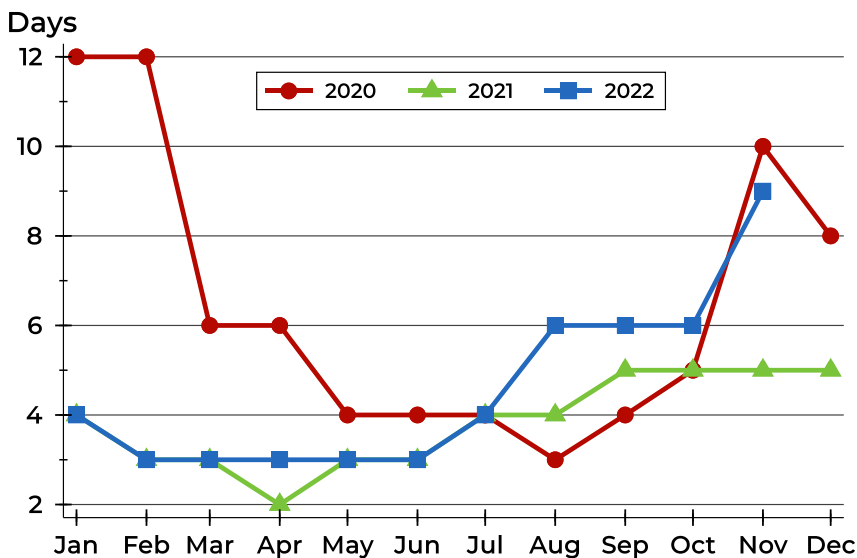
Sedgwick County Contracts Written Analysis

Average DOM



Month	2020	2021	2022
January	39	25	21
February	35	27	16
March	24	16	13
April	29	13	9
May	24	13	10
June	26	11	10
July	21	11	11
August	19	18	16
September	21	16	16
October	19	17	19
November	26	17	19
December	23	18	

Median DOM



Month	2020	2021	2022
January	12	4	4
February	12	3	3
March	6	3	3
April	6	2	3
May	4	3	3
June	4	3	3
July	4	4	4
August	3	4	6
September	4	5	6
October	5	5	6
November	10	5	9
December	8	5	



**November
2022**

South Central Kansas MLS Statistics



South Central Kansas MLS

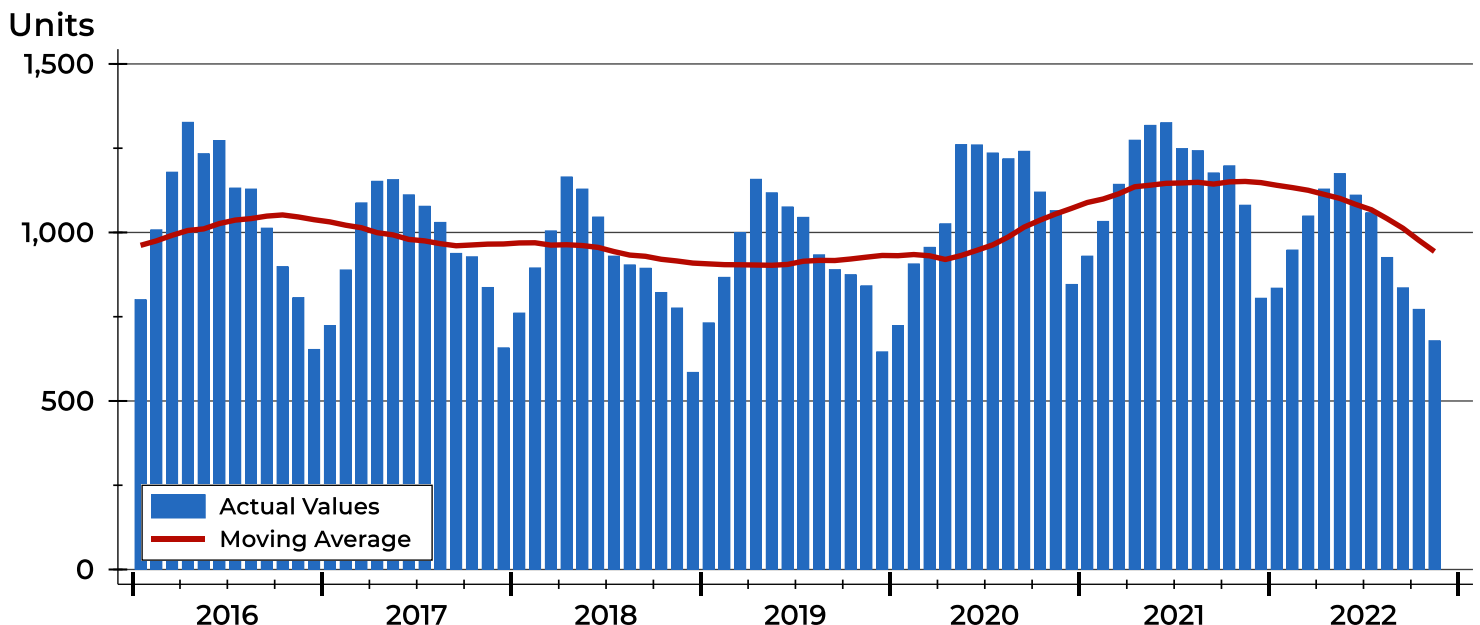
Sedgwick County Pending Contracts Analysis

Summary Statistics for Pending Contracts		End of November		
		2022	2021	Change
Pending Contracts		679	1,081	-37.2%
Volume (1,000s)		183,640	276,701	-33.6%
Average	List Price	270,456	255,967	5.7%
	Days on Market	20	19	5.3%
	Percent of Original	99.2%	99.1%	0.1%
Median	List Price	240,950	230,000	4.8%
	Days on Market	6	4	50.0%
	Percent of Original	100.0%	100.0%	0.0%

A total of 679 listings in Sedgwick County had contracts pending at the end of November, down from 1,081 contracts pending at the end of November 2021.

Pending contracts reflect listings with a contract in place at the end of the month. In contrast, contracts written measures the number of listings put under contract during the month.

History of Pending Contracts





**November
2022**

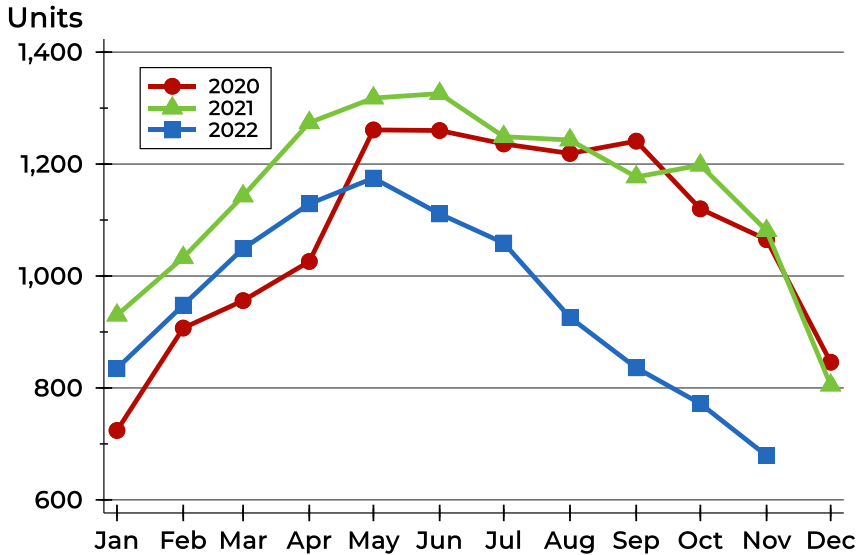
South Central Kansas MLS Statistics



South Central Kansas MLS

Sedgwick County Pending Contracts Analysis

Pending Contracts by Month



Month	2020	2021	2022
January	724	930	835
February	907	1,033	948
March	956	1,143	1,049
April	1,026	1,274	1,129
May	1,261	1,318	1,175
June	1,260	1,326	1,111
July	1,236	1,249	1,059
August	1,219	1,243	926
September	1,241	1,177	836
October	1,120	1,198	772
November	1,065	1,081	679
December	846	805	

Pending Contracts by Price Range

Price Range	Pending Contracts Number	Percent	List Price Average	Median	Days on Market Avg.	Med.	Price as % of Orig. Avg.	Med.
Below \$25,000	0	0.0%	N/A	N/A	N/A	N/A	N/A	N/A
\$25,000-\$49,999	13	2.0%	42,100	43,000	15	1	98.6%	100.0%
\$50,000-\$99,999	28	4.3%	82,454	87,000	94	13	97.2%	100.0%
\$100,000-\$124,999	39	5.9%	111,949	115,000	16	6	98.5%	100.0%
\$125,000-\$149,999	55	8.4%	134,883	134,900	14	5	98.8%	100.0%
\$150,000-\$174,999	47	7.2%	160,491	160,000	8	5	99.8%	100.0%
\$175,000-\$199,999	56	8.5%	187,847	185,000	11	4	99.3%	100.0%
\$200,000-\$249,999	116	17.7%	227,738	228,000	17	8	99.6%	100.0%
\$250,000-\$299,999	94	14.3%	274,300	272,485	19	4	99.7%	100.0%
\$300,000-\$399,999	112	17.0%	347,966	349,700	23	8	99.1%	100.0%
\$400,000-\$499,999	53	8.1%	440,929	430,000	16	3	99.4%	100.0%
\$500,000-\$749,999	31	4.7%	604,778	599,900	15	0	98.8%	100.0%
\$750,000-\$999,999	11	1.7%	853,354	835,500	15	0	99.5%	100.0%
\$1,000,000 and up	2	0.3%	1,154,284	1,154,284	7	7	106.7%	106.7%



**November
2022**

South Central Kansas MLS Statistics

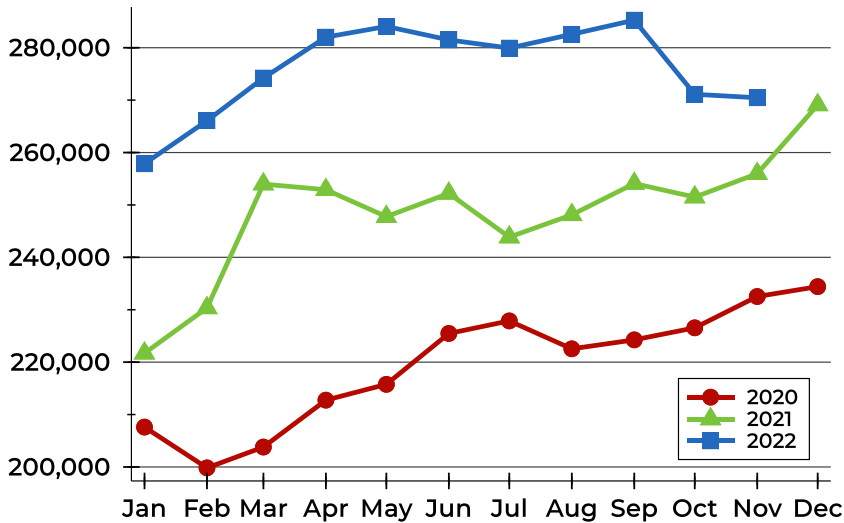


South Central Kansas MLS

Sedgwick County Pending Contracts Analysis

Average Price

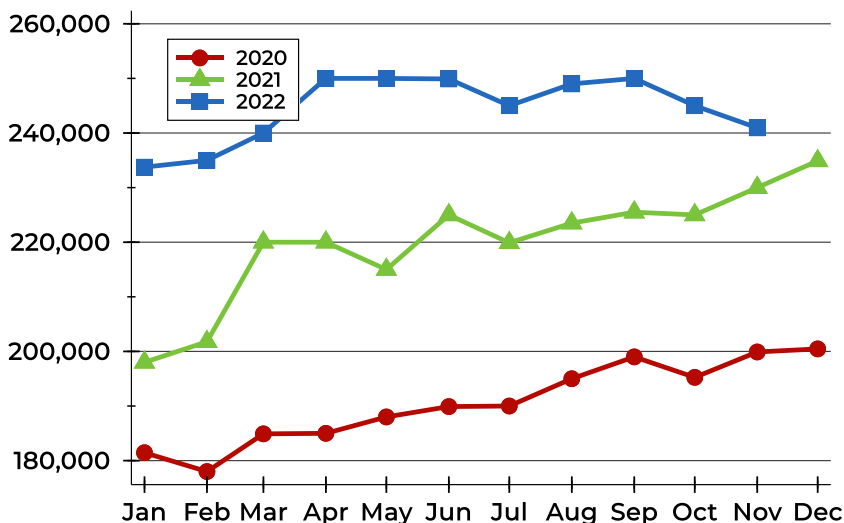
Dollars



Month	2020	2021	2022
January	207,613	221,697	257,866
February	199,828	230,351	266,078
March	203,800	253,977	274,214
April	212,755	252,909	282,018
May	215,770	247,775	284,061
June	225,476	252,204	281,499
July	227,873	243,865	279,936
August	222,543	248,111	282,562
September	224,257	254,082	285,264
October	226,553	251,498	271,116
November	232,529	255,967	270,456
December	234,413	269,082	

Median Price

Dollars



Month	2020	2021	2022
January	181,450	198,000	233,750
February	178,000	201,774	235,000
March	184,900	220,000	240,000
April	185,000	220,000	250,000
May	188,000	215,000	250,000
June	189,900	225,000	249,900
July	190,000	219,900	245,000
August	195,000	223,500	249,000
September	199,000	225,500	250,000
October	195,248	225,000	245,000
November	199,900	230,000	240,950
December	200,460	234,900	



**November
2022**

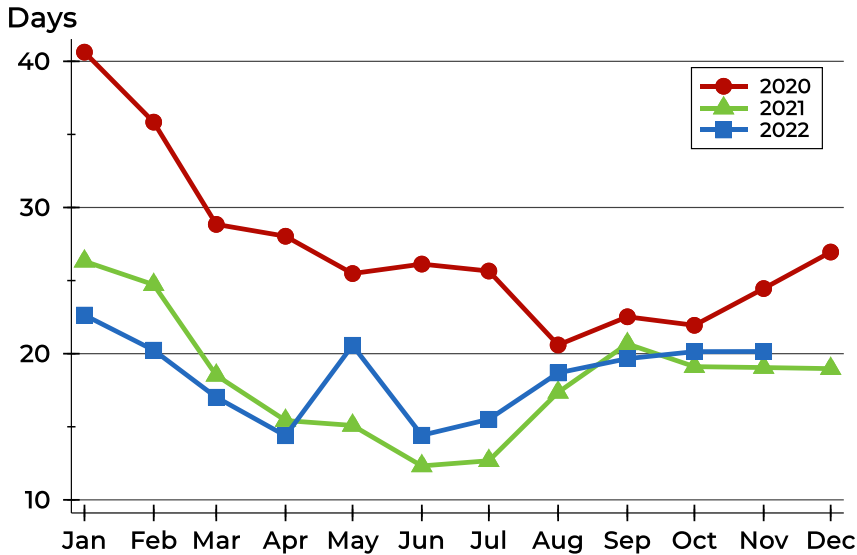
South Central Kansas MLS Statistics



South Central Kansas MLS

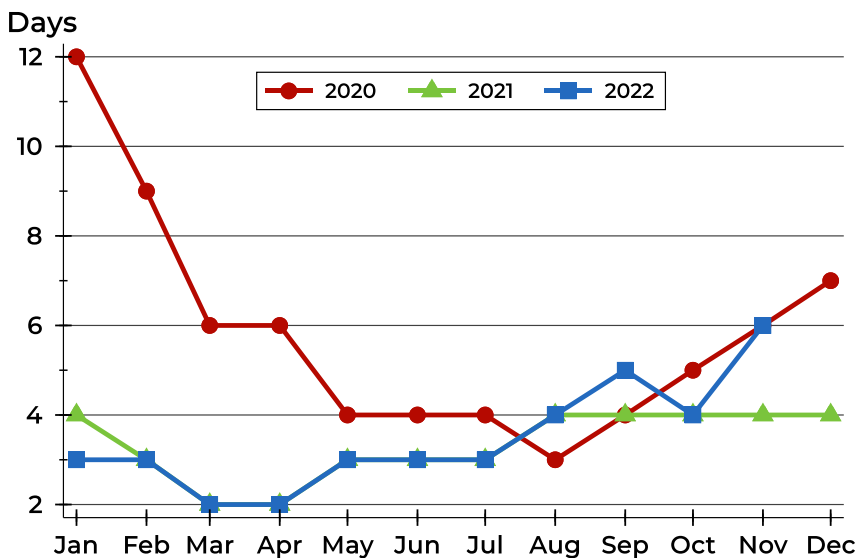
Sedgwick County Pending Contracts Analysis

Average DOM



Month	2020	2021	2022
January	41	26	23
February	36	25	20
March	29	19	17
April	28	15	14
May	25	15	21
June	26	12	14
July	26	13	16
August	21	17	19
September	23	21	20
October	22	19	20
November	24	19	20
December	27	19	

Median DOM



Month	2020	2021	2022
January	12	4	3
February	9	3	3
March	6	2	2
April	6	2	2
May	4	3	3
June	4	3	3
July	4	3	3
August	3	4	4
September	4	4	5
October	5	4	4
November	6	4	6
December	7	4	